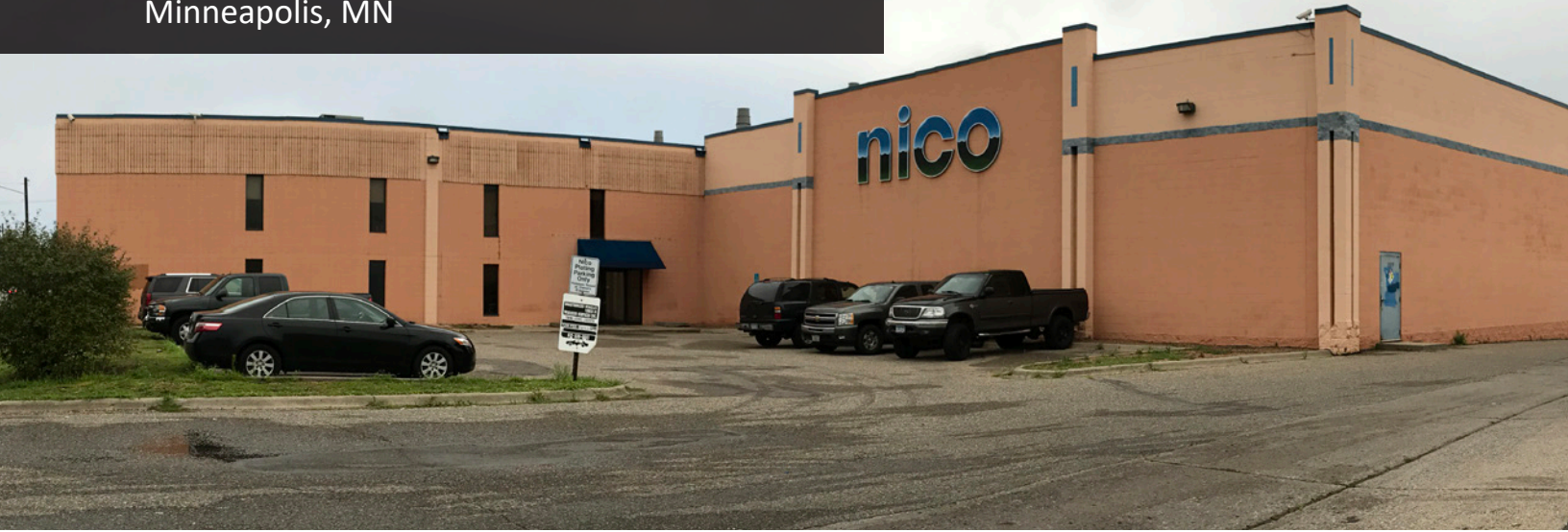


Nico Loading Dock Relocation

Minneapolis, MN



Integrity Built

Due to street reconfiguration in the area, the loading docks of the Nico facility were required to be relocated from one area of the building to another. This relocation involved upgrades to the site and exterior painting as well as moving critical plant operations including steam boilers, electrical distribution panels, and production lines. All work was done in detailed phases so that the operations of the plant were never shut down.

Client - The Lindgren Group

Architect - CNH Architects

Construction Cost - \$8 Million

Project Size - 50,000 SF

Loeffler Role - Preconstruction & Construction Services

